

REVISIONS			
REV	DESCRIPTION	DATE	APPROVED
A	INITIAL RELEASE	27-AUG-24	K.BARRETT


HOLE TOLERANCE

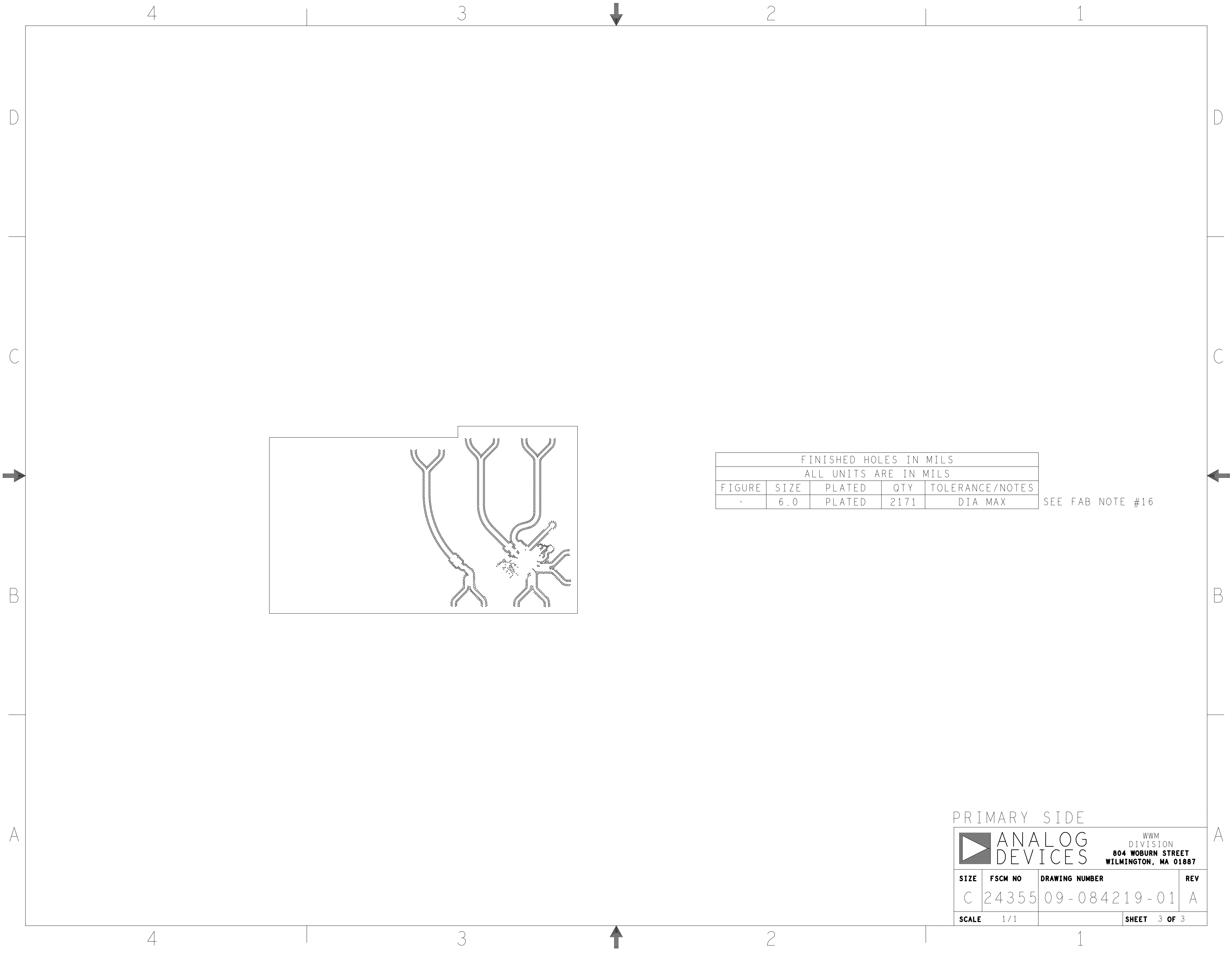
UNLESS SPECIFIED
PLATED: +/- .003
NON PLATED: +/- .002

FINISHED HOLES IN MILS				
ALL UNITS ARE IN MILS				
FIGURE	SIZE	PLATED	QTY	TOLERANCE/NOTES
•	10.0	PLATED	9	DIA MAX
·	14.0	PLATED	108	DIA MAX
°	14.0	PLATED	968	
◦	16.0	PLATED	48	
◌	35.0	PLATED	1	
◊	40.0	PLATED	48	
◇	63.0	PLATED	9	
△	70.0	PLATED	22	
○	213.0	PLATED	2	
A	28.0	NON-PLATED	1	
B	43.0	NON-PLATED	1	
C	122.0	NON-PLATED	4	
D	125.0	NON-PLATED	2	

SEE FAB NOTE #15
SEE FAB NOTE #15

PRIMARY SIDE

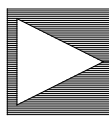
UNLESS OTHERWISE SPECIFIED DIMENSIONS ARE IN INCHES TOLERANCES DECIMALS FRACTIONS ANGLES .XX --.010 --1/32 -- 2 .XXX --.005 .XXXX --.0050			APPROVAL		DATE		<div><div></div><div>ANALOG DEVICES</div></div> <div>WWM DIVISION 804 WOBURN STREET WILMINGTON, MA 01887</div>											
			TEMPLATE ENGINEER N/A		N/A													
MATERIAL			HARDWARE SERVICES E. ESCALANTE		02DEC20		TITLE FABRICATION EV-ADF4383SD1Z											
			HARDWARE SYSTEMS N/A		N/A													
			TEST ENGINEER N/A		N/A													
			COMPONENT ENGINEER M. YAN		02DEC20													
FINISH			TEST PROCESS N/A		N/A		SIZE C											
			HARDWARE RELEASE K. JABATAN		02DEC20						FSCM NO 24355							
			DESIGNER PADDY DUIGNAN		27AUG24										DRAWING NUMBER 09-084219-01			
			PTD ENGINEER KIERAN BARRETT		27AUG24													
			CHECKER N/A		N/A		REV A											
DO NOT SCALE DWG							SCALE		1 / 1		SHEET		1 OF 3					



FINISHED HOLES IN MILS				
ALL UNITS ARE IN MILS				
FIGURE	SIZE	PLATED	QTY	TOLERANCE/NOTES
.	6.0	PLATED	2171	DIA MAX

SEE FAB NOTE #16

PRIMARY SIDE

ANALOG
DEVICES


WWM
DIVISION
804 WOBURN STREET
WILMINGTON, MA 01887

SIZE	FSCM NO	DRAWING NUMBER	REV
C	24355	09-084219-01	A
SCALE	1/1	SHEET	3 OF 3

ROHS COMPLIANCE NOTE;	HOMOGENOUS MATERIALS IN THIS BOARD SHALL BE COMPLIANT THE EU RoHS DIRECTIVE 2002/95/EC
MATERIALS;	ALL LAMINATES AND BONDING MATERIALS SHOULD BE SELECTED FROM IPC-4101 OR IPC-4103, MINIMUM Tg>170degC, Td>300degC, U.L. RATING OF 94 V-0
MATERIAL FAMILY;	RO4003C, ISOLA370HR
CLADDING;	EXTERNAL LAYERS .5 OZ. COPPER, OVERPLATE TO 1.5 OZ. INTERNAL SIGNAL LAYERS .5 OZ. COPPER. INTERNAL PLANE LAYERS 1 OZ. COPPER. NOTE: IF THE LAYER STACKUP CONFLICTS WITH THE ABOVE CLADDING SPECIFICATIONS THEN THE LAYER STACKUP SHALL TAKE PRECEDENCE.
SOLDER MASK;	SHALL BE LIQUID PHOTOIMAGEABLE (LPI) APPLIED ON BOTH SIDES OVER BARE COPPER OR GOLD AND SHALL MEET IPC-SM-840 (LATEST REV.) CLASS 3. COLOR GREEN.
SILK SCREEN;	SHALL BE PERMANENT NON-CONDUCTIVE EPOXY INK. COLOR: WHITE SYNTHETIC INKJET PRINTING ALLOWED FOR DENSE BOARDS, COLOR: WHITE
SURFACE FINISH;	ENIG (ELECTROLESS NICKEL/IMMERSION GOLD) PER IPC-4552 LATEST REVISION
INTENTIONAL SHORTS;	IF SUPPLIED DATA INCLUDES A FILE "READ_ME.2", THEN INTENTIONAL NET SHORTS EXIST. CUSTOMER REVIEW AND APPROVAL IS REQUIRED IF SUPPLIED DATA REPORTS ANY CONDITION THAT DOES NOT MATCH "READ_ME.2" FILE PROVIDED.
TEST REQUIREMENTS;	100% NETLIST ELECTRICAL VERIFICATION USING CUSTOMER SUPPLIED IPC-D-356 NETLIST FOR OPENS AND SHORTS WHEN "GERBER DATA" IS PROVIDED. THIS VERIFICATION ALSO REQUIRED FOR "ODB++" DATA PER EMBEDDED NETLIST.

	_____	PRIMARY SILKSCREEN
	_____	PRIMARY SOLDER MASK
NOMINAL	_____	PRIMARY SIDE (LAYER 1) 50 OHMS CPW
FINISHED	<u>RO4003C 8 MILS</u>	L2_GND PLANE (LAYER 2)
BOARD	<u>PREPREG A/R</u>	L3_PWR PLANE (LAYER 3)
THICKNESS	<u>ISOLA370HR 24 MILS</u>	SECONDARY SIDE (LAYER 4)
0.062"		
+/- 10 MILS		
	_____	SECONDARY SOLDER MASK
	_____	SECONDARY SILKSCREEN

1. REFER TO IPC-6010 SERIES (LATEST REV.), CLASS 2 FOR
2. ACCEPTABILITY PER ANALOG DEVICES, INC. SPECIFICATION TST00115, (LATEST REVISION.)
3. MODIFICATIONS TO THE ARTWORK ARE NOT ALLOWED WITHOUT WRITTEN AUTHORIZATION.
4. HOLE PATTERN TOLERANCES FOR UNDIMENSIONED HOLES SHALL BE A DIAMETER OF 0.005 INCHES FROM THEIR TRUE POSITION.
5. PLATED HOLE WALL THICKNESS SHALL NOT BE LESS THAN 0.001 INCH MINIMUM AVERAGE, WITH NO READING LESS THAN .0008 BY CROSS SECTION.
6. HOLE DIAMETERS APPLY AFTER PLATING.
7. FINISHED CONDUCTOR WIDTHS SHALL NOT BE REDUCED FROM THE NOMINAL INDICATED ON THE MASTER PATTERN, BY MORE THAN THE CONDUCTOR THICKNESS.
8. MINIMUM DESIGN LINE WIDTH IS .008 INCH.
9. MINIMUM DESIGN SPACING IS .005 INCH.
- ~~10. NON-FUNCTIONAL PAD REMOVAL FROM INNER SIGNAL LAYERS MAY BE PERFORMED AFTER CUSTOMER APPROVAL.~~
11. IF PAD SIZES PROVIDED ARE NOT LARGE ENOUGH TO MAINTAIN ANNULAR RING REQUIREMENT, MFGR. MAY REQUEST APPROVAL TO TEAR DROP PADS TO MAINTAIN ANNULAR RING. (AT PAD TO TRACE INTERSECTION ONLY AND ELECTRICAL INTEGRITY MUST BE MAINTAINED.)
12. THIEVING MAY BE ADDED TO COMPENSATE FOR LOW COPPER DENSITY AREAS ON THIS DESIGN ONLY AFTER REVIEW AND APPROVAL FROM THE CUSTOMER:
 - A. THIEVING TO CARD EDGE, FIDUCIALS, NON-PLATED THROUGH HOLES, ALL OTHER FEATURES TO BE 0.200 INCH MINIMUM.
 - B. THERE SHALL BE NO THIEVING IN ANY AREAS FREE OF SOLDER MASK OR INTERNAL COPPER PLANES.
13. MFGR. TO LEGIBLY ETCH OR STAMP/SCREEN WITH PERMANENT NON-CONDUCTIVE INK ON SECONDARY SIDE IN A CLEAR AREA UNLESS OTHERWISE INDICATED;
 - ~~A. U.L. CODE FLAMMABILITY RATING~~
 - B. DATE CODE (STAMP).
 - C. LOT NUMBER
 - D. MFGR LOGO
 - E. SUCCESSFUL ELECTRICAL TEST.
14. REPAIRS PER IPC-7711/21 (LATEST REV.) ARE ALLOWED.
15. THRU VIAS FILLED WITH NON-CONDUCTIVE EPOXY AND PLATED OVER. COPLANAR ON BOTH SIDES PRIOR TO FINAL PLATING.
16. BLIND VIAS INDICATED TO BE PLATED SHUT AND PLANARIZED.

 ANALOG DEVICES		WWM DIVISION 804 WOBURN STREET WILMINGTON, MA 01887	
SIZE	FSCM NO	DRAWING NUMBER	REV
C	24355	09-084219-01	A
SCALE	1/1		SHEET 2 OF 3